

## Copper bonded steel earth rod



F249

### Application

This earth rod is used for the power networks earth system. The copper coating made by electrolytic process gives a resistance to corrosion as well as a good conductivity. The reference standards are **EN 50 164-2** and **EN 62 561-2**.

Code	Designation	Nominal diameter (mm)	Real diameter (mm)	Length (m)	Weight (kg)	Sales unit
<b>50µm COPPER COATING</b>						
U203	EARTH ROD COPPER 50µm L = 1m DIAM 12.7	14	12.7	1	1.025	10
U204	EARTH ROD COPPER 50µm L = 1.5m DIAM 12.7	14	12.7	1.5	1.537	10
U205	EARTH ROD COPPER 50µm L = 2m DIAM 12.7	14	12.7	2	2.050	10
F226	EARTH ROD COPPER 50µm L = 1m DIAM 14	16	14	1	1.250	10
F244	EARTH ROD COPPER 50µm L = 1.5m DIAM 14	16	14	1.5	1.900	10
F245	EARTH ROD COPPER 50µm L = 2m DIAM 14	16	14	2	2.500	10
<b>100µm COPPER COATING</b>						
U 230	EARTH ROD COPPER 100µm L = 1m DIAM 14	16	14	1	1.250	10
U 231	EARTH ROD COPPER 100µm L = 1.5m DIAM 14	16	14	1.5	1.900	10
U 232	EARTH ROD COPPER 100µm L = 2m DIAM 14	16	14	2	2.500	10
U 233	EARTH ROD COPPER 100µm L = 1m DIAM 17.2	19	17.2	1	2.000	10
U 234	EARTH ROD COPPER 100µm L = 1.5m DIAM 17.2	19	17.2	1.5	3.000	10
U 235	EARTH ROD COPPER 100µm L = 2m DIAM 17.2	19	17.2	2	4.000	10
<b>254µm COPPER COATING</b>						
U206	EARTH ROD COPPER 254µm L = 1m DIAM 14	16	14	1	1.250	10
F249	EARTH ROD COPPER 254µm L = 1.5m DIAM 14	16	14	1.5	1.900	10
F227	EARTH ROD COPPER 254µm L = 2m DIAM 14	16	14	2	2.500	10
U207	EARTH ROD COPPER 254µm L = 3m DIAM 14	16	14	3	3.700	10
U208	EARTH ROD COPPER 254µm L = 1m DIAM 17.2	19	17.2	1	2.000	10
U209	EARTH ROD COPPER 254µm L = 1.5m DIAM 17.2	19	17.2	1.5	3.000	10
U210	EARTH ROD COPPER 254µm L = 2m DIAM 17.2	19	17.2	2	4.000	10
U211	EARTH ROD COPPER 254µm L = 3m DIAM 17.2	19	17.2	3	6.000	10
<b>350µm COPPER COATING</b>						
U212	EARTH ROD COPPER 350µm L = 1m DIAM 17.2	19	17.2	1	2.000	10
U213	EARTH ROD COPPER 350µm L = 1.5m DIAM 17.2	19	17.2	1.5	3.000	10
U214	EARTH ROD COPPER 350µm L = 2m DIAM 17.2	19	17.2	2	4.000	10

Nota: Other dimensions are available, please enquire.

## Clamp



F234



F224

### Application

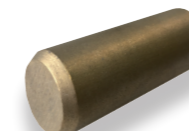
This **brass clamp with stainless steel bolts** is designed to establish a connection between the earth rod and the conductor. The cable can be fixed radially or axially through the "U" bolt clamp. The round connection clamp can be in bronze.

Code	Designation	Compatible with earth rod		Conductors sections (mm <sup>2</sup> )	Screw	Weight (kg)	Sales unit
		Nominal diameter (mm)	Real diameter (mm)				
<b>ROUND CONNECTION CLAMP</b>							
F234	CONNECTION CLAMP ROD DIAM 12.7 AND 14mm	14 - 16	12.7-14	16-35	M8	0,050	10
F234-B	CONNECTION CLAMP ROD DIAM 12.7 AND 14mm - BRONZE	14 - 16	12.7-14	16-35	M8	0,050	10
F246	CONNECTION CLAMP ROD DIAM 17.2mm	19	17.2	16-150	M8	0,050	10
<b>"U" BOLT CONNECTION CLAMP</b>							
F233	"U" BOLT CONNECTION CLAMP 50 <sup>2</sup> ROD DIAM 12.7 + 14 THREADED	14 - 16	12.7-14	16 - 50	-	0,095	10
F224	"U" BOLT CONNECTION CLAMP 150 <sup>2</sup> ROD DIAM 12.7 TO 17.2	19	17.2	70-150 / 2x35-70	-	0.230	25

## Accessory



F229



F238



L267 - L268

### Application

These **brass driving spikes and heads** are designed to protect the earth rod during the installation. They enable to preserve the copper coating and its technical features. The **taper coupling is made of brass**. It allows the junction between two unthreaded earth rods with nominal diameter 16mm.

Code	Designation	Compatible with earth rod		Weight (kg)	Sales unit
		Nominal diameter (mm)	Real diameter (mm)		
F229	DRIVING SPIKE FOR ROD DIAM 12.7 + 14 UNTHREADED	14-16	12.7-14	0.115	10
F239	DRIVING SPIKE FOR ROD DIAM 17.2 UNTHREADED	19	12.7-14	0.145	10
U227	DRIVING HEAD FOR ROD DIAM 12.7	14	12.7	0.115	10
F238	DRIVING HEAD FOR ROD DIAM 14	16	14	0.115	10
F237	DRIVING HEAD FOR ROD DIAM 17.2	19	17.2	0.153	10
L268	TAPER COUPLING FOR ROD DIAM 5/8" - 50µm	16	14	0.135	10
L267	TAPER COUPLING FOR ROD DIAM 5/8" - 250µm	16	14	0.100	25